



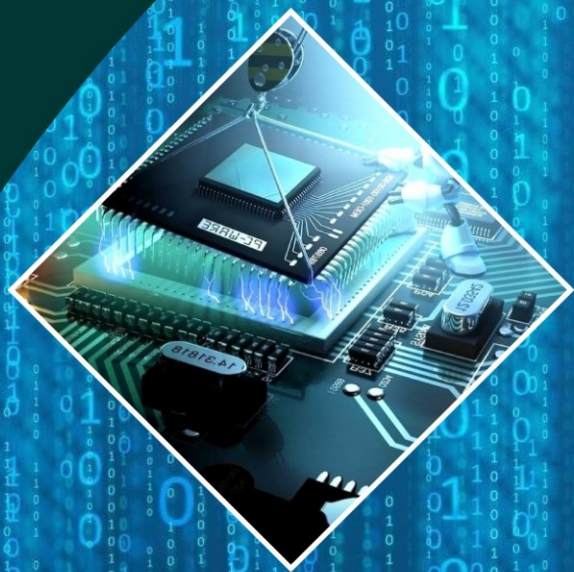
instec india

**Clean Room
Products**



OUR PRODUCT RANGE

- ✓ Door Interlock System
- ✓ Man & Material Air Shower Controller
- ✓ Static and Dynamic Passbox Controller
- ✓ Laminar Air Flow Controller
- ✓ Bio-Safety Controller
- ✓ Temperature, Humidity and Pressure Monitors
- ✓ Real Time Clocks
- ✓ Data Loggers and Scanners



STATIC & DYNAMIC PASSBOX CONTROLLER



DESCRIPTION

The Static/Dynamic Pass Box inter locking system controls the sequential locking and release of the doors and control the blower, U.V. Tube & CF Tube also. The opening/closing of the door is manual or ideally through a closure mechanism. In normal condition, both the doors should be in locked state. any door can open by pressing switch of keypad shows the status of operation. Various visual / audio indications indicates status of operations or any problem occurs in the operations. Pass box is used for material transfer from one Clean room or unclassified area to another clean room or classified area. It consists of a rectangular box with two doors/three doors. The all doors are interlocked such that all doors cannot be open at the same time, to prevent pressure losses and cross contamination at the time of the material transferring process. Preventing simultaneous access of doors/Rooms.

FEATURES

- Advance Micro controller base technology.
- Support upto 3 doors. & Double door option available.
- Door status indication with LED as well as LCD display.
- Auto controlling facility of U.V. LIGHT, CF LIGHT & BLOWER as well as manually ON/OFF .
- Inbuilt U.V. HOUR METER .
- Password facility.
- Timer for
 - Door Opening Time.
 - Door Closing Time.
 - Blower On Time.
 - U.V. On Time.
 - Process Timer.
 - Buzzer Timer.
- Support Electro Magnetic Lock/ Electric Strikers.
- Support Emergency & Fire Stations.
- Easy to installation & user friendly
- Support RS485.

SPECIFICATIONS

- **Door Access Panel Inputs & Outputs**
 - Inputs : 2 Nos. switches per door.
 - Outputs : 2 Nos. led indicator per switch.
- **Control Card Digital Inputs & Outputs**
 - Inputs : 1 Nos. per door.
 - Outputs : 5 Nos. relay output.
- **Keys & Programming**
 - 4 Soft touch Programming keys
 - Programmable Delay between each door 0 to 99 Sec.
 - Programmable various Timer for controlling action.
 - Non-Volatile Flash Memory.
- **Power**
 - 120 VAC to 260 VAC @ 50 Hz
- **Environmental**
 - Temperature : 0 to 80°C.
 - RH : 10 – 95%, Non-condensing.

AIR SHOWER CONTROLLER



DESCRIPTION

The Air Shower Controller is a supporting device for the clean workshops & the assembly clean room, is used to blow the dusts attached to the surface of the people & objects entering the clean workshop, & also functions as an air brake to prevent non-purified air from entering the clean area. The Air Shower Controller Systems the sequential locking & release of the doors, & controls the blower. The two doors are interlocked such that doors cannot be open at the same time, to prevent pressure losses & cross contamination. INSTEC INDIA Air Shower interlocking systems achieve this by preventing simultaneous access of door, also having settable shower time & many features.

FEATURES

- Advanced Micro controller based.
- Supports Emergency & fire alarm Stations.
- Door status indication with LED as well as LCD Display.
- Delay between door openings 10 Sec.
- Auto close time is 10 Sec.
- Facility available to read feed back from Magnetic Read Sensors.
- Timer facility for shower (Blower on time).
- Supports entry from Exit doors.

- Easy to installation & user friendly wiring.
- Soft touch Membrane keypad.
- System can also be connect to Building Management System (BMS)
- Air Shower Controller

OPTIONAL FEATURES

- Supports Access control module interface.
- Available Doors Real Time Event Logging and output to PC Connectivity.

SPECIFICATIONS

Door Access Panel Inputs & Outputs

Inputs : 2 Nos. switches per door.

Outputs : 2 Nos. led indicator per switch.

Control Card Digital Inputs & Outputs

Inputs : 1 Nos. per door.

Outputs : 4 Nos. relay output 230V / 5 A.

Keys & Programming

4 Soft touch Programming keys

Programmable Delay between each door 0 to 99 Sec.

Programmable various Timer for controlling action.

Non-Volatile Flash Memory.

Power

120 VAC to 260 VAC @ 50 Hz

Environmental

Temperature : 0 to 100°C.

RH : 10 – 95%, Non-condensing.

DOOR INTERLOCK SYSTEM



DESCRIPTION

Door Inter Locking System achieves in prevention of process area contamination by in clean room areas & microbiological labs, any personnel passing through an unclassified area to a classified area is required to pass through series of rooms. In each room certain steps need to be followed by defined guidelines prepared by various agencies around the world. This procedure ensures that the person is not carrying any external microbiological and particles contamination in to the process area and also the pressure in each room is maintained before opening of door.

Door Inter Locking System Ensures that when one door for a room is

- OPEN then all other doors in that particular room are closed.
- In Emergency an override key is available on a push button module for all door's opening.
- Preventing simultaneous access of doors/Rooms.

FEATURES

- Advanced Micro controller based.
- Supports Maximum number of doors with the cascading of 2 Door and 3 Door
- Controlling systems as per user requirements. Support more than 99 Doors in cascading. Supports Emergency & fire alarm Stations.
- Sequence of door inter Locking is field configurable with the DIP SWITCH. Delay between door openings 10 Sec.
- Auto close time is 10 Sec.
- Facility available to read feed back from Magnetic Lock.

Easy to installation & user friendly wiring.

- Soft touch Membrane keypad.
- System can also be connect to Building Management System (BMS)

OPTIONAL FEATURES

- Supports Access control module interface.
- Available Doors Real Time Event Logging and output to PC Connectivity.

SPECIFICATIONS

Door Access Panel Inputs & Outputs

Inputs : 2 No, switches. per door.

Outputs : 2nos. led indicator per switch.

Control Card Digital Inputs & Outputs

Inputs : 1No, per door.

Outputs : 1 relay output 230V / 5 A.

Programming

Logic sector DIP switches for Door control sequencing. **Power** 90 to 260 VAC @ 50 Hz

Environmental

Temperature : -5 to 80°C.

RH : 10 – 95%, Non-condensing.

OUR VALUABLE CLIENTELE

AJANTA PHARMA LIMITED AURANGABAD

NEON LABORATORIES LTD. PALGHAR

MERIL HEALTHCARE PVT. LTD. VAPI

JACSON LABORATORIES H. P.

HEMMO PHARMACUTICALS PVT. LTD.

KOPRAN RESEARCH LABORATORIES LTD

O. E. MANUFACTURES & ELECTRICAL CONTRACTORES.

Office : Shop no . 2 Shree Samarth Krupa Apt., Pandit Dindayal Road Dombivli (W) 421202

Factory : Gala no.6, Om Namo Gurudattakrupa, Opp. Citi Mall, Sagaon, Behind Unity Hight, Manpada Road, Dombivli (E) Thane Maharashtra. India. Email : instecindia@gmail.com, sales@instecindia.com (T) : 0251-2480641 , +91 93722 08569